

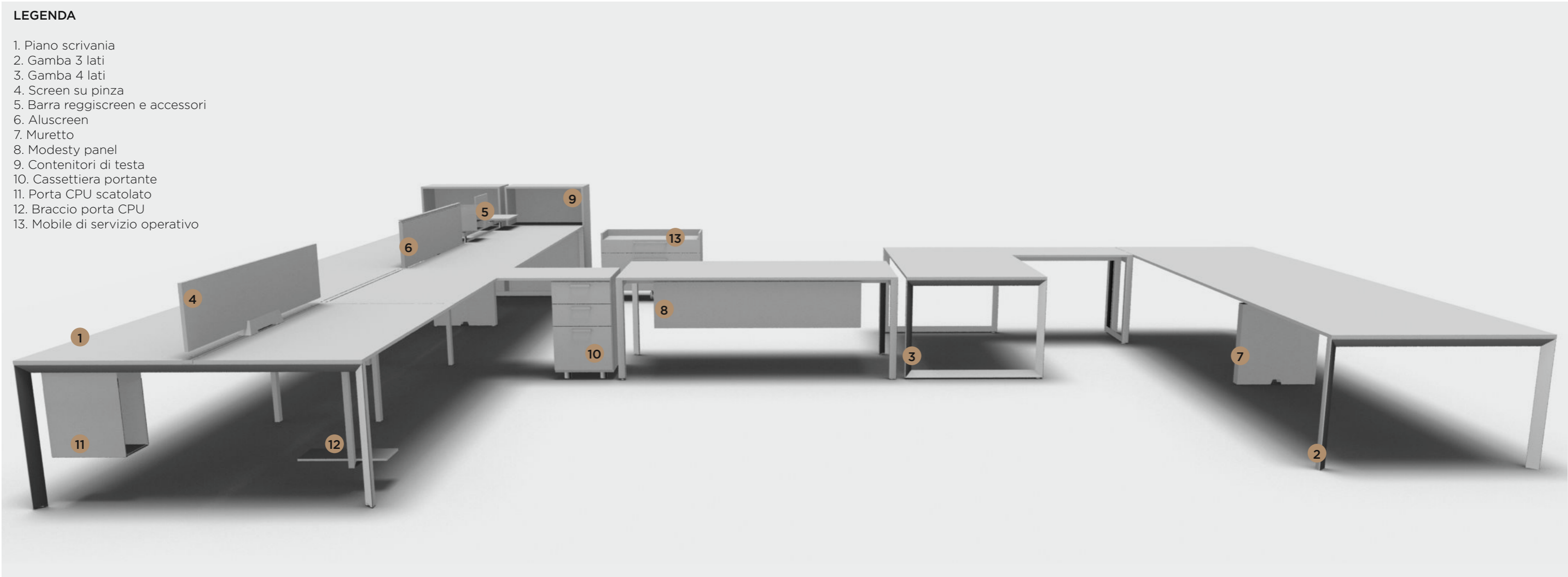
# *Diamond*

product data sheet

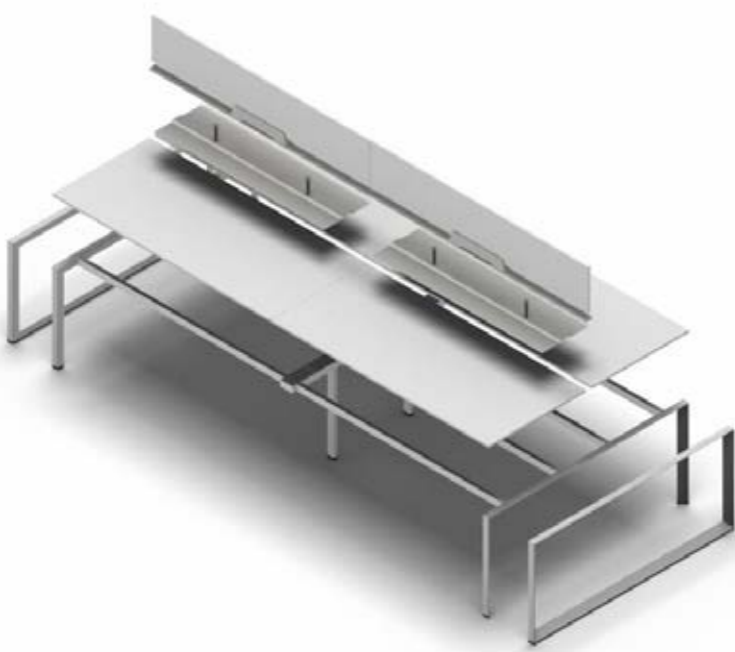
The triangular section of tables structure is the conceptual and formal starting point of Diamond: a distinctive mark that generates ever-changing geometries, changing depending on the observer's point of view, creating an infinite number of compositions and situations. Collective long tables, group workstations, desks, double or single: ways to live and share the latest aesthetic, functional and architectural values of the contemporary work environment. Highly characterizing are the great callipers supporting the dividing screens of multiple locations.



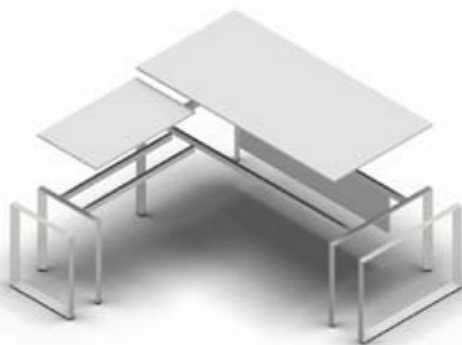
ESPLOSO



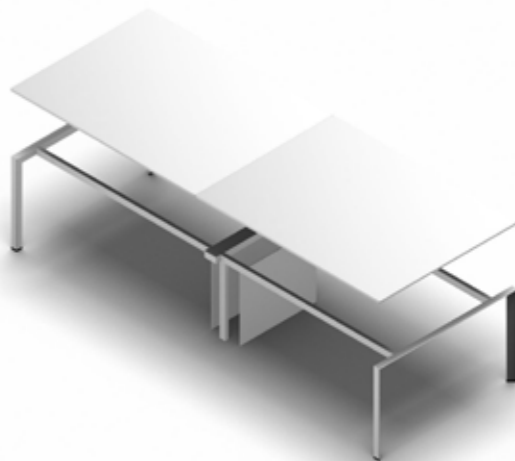
OPERATIVE



EXECUTIVE

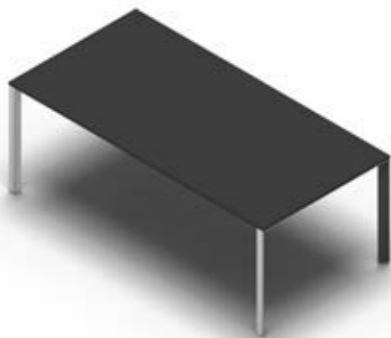


MEETING



TOPS

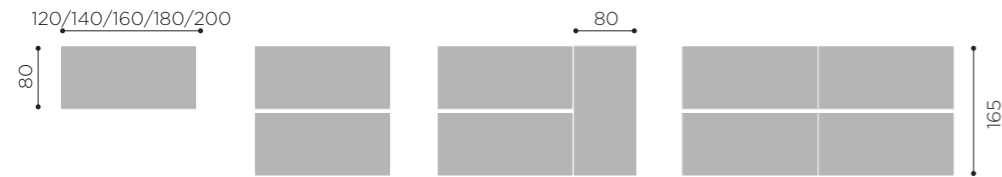
1



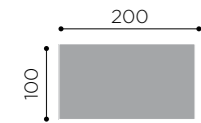
**Wood tops:** made of wood fiber panels, class E1, th.19 mm, and veneered with natural wood veneer for the walnut finish and reconstituted wood veneer for the ebony finishes, wengè.  
**Melamine tops:** made of wood fiber panels, th. 18 mm, ennobled in melamine, class E1, lined with 2 mm thick ABS edges to match the surface.  
**Glass tops:** they are made of 12 mm th. polished edge tempered glass, etched on the top and painted in white or black on the bottom.

DIMENSIONS

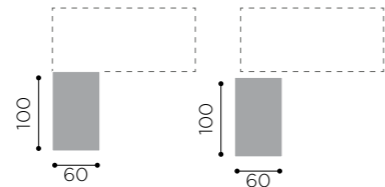
OPERATIVE



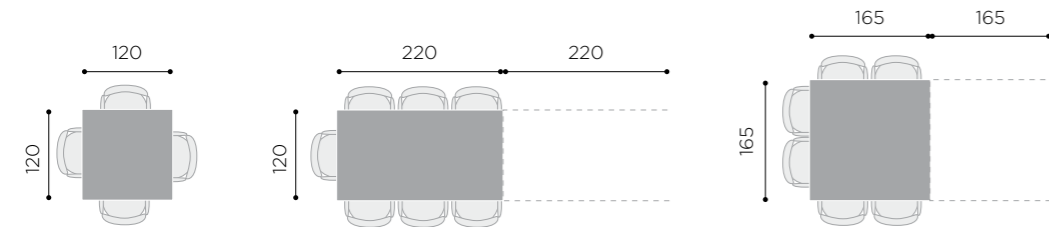
EXECUTIVE



ESTENSION

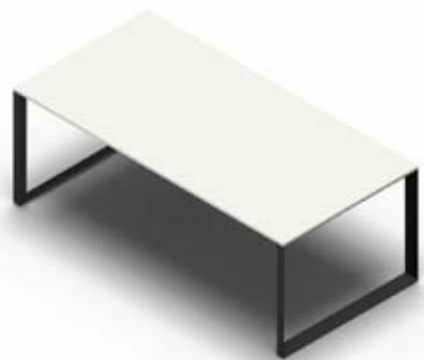


MEETING



STRUCTURE

2 3 7



**Fixed Leg “3 SIDES”:** drawn steel profile th. 2 mm. triangular section of 50x50 mm, welded at 45° on corners.

**Adjustable Leg H.62/82:** drawn steel profile th. 2 mm. triangular section of 50x50 mm, welded at 45° on corners. Complete, at the bottom, of extruded aluminium adjustment in oxidized finish, with the possibility of variation in height from 620 mm to 820 mm (H.+200 mm), and fitted with plastic feet, which provide fine adjustment in height (H +10 mm)..

**Fixed leg “4 SIDES”:** only applies to executive desks: drawn steel profile th. 2 mm. triangular section 50x50 mm on four sides (top, bottom and sides), welded at 45° on corners..

DIMENSIONS



TECHNICAL DETAILS



**Columns.** It consists of two vertical columns with a rectangular steel profile, th. 2 mm and section 60x20 mm which are screwed to a 2 mm th. steel element, section 100x50.



**Fixed intermediate wireable wall.** this consists of two vertical columns in rectangular steel profile with sec. 60x20 mm and thickness 2 mm, and an upper joining crosspiece of 3 mm thick sheet steel bent into a U shape.



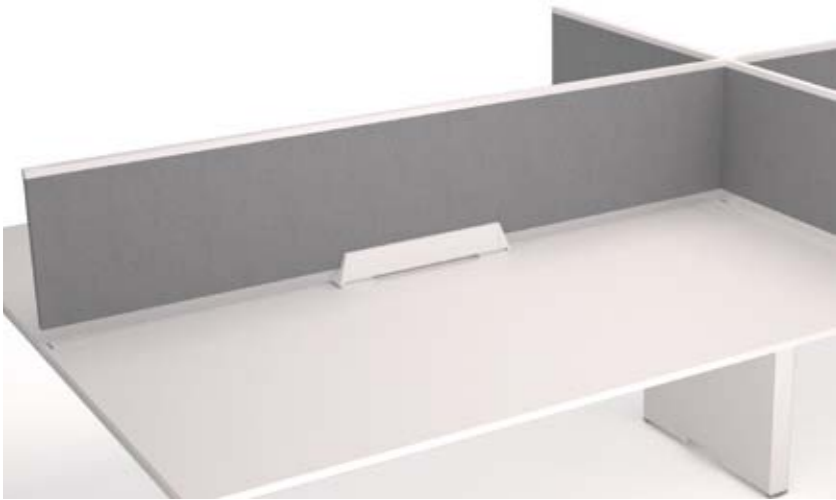
**Feets.** fitted with plastic feet, which provide fine adjustment in height (H +10 mm).



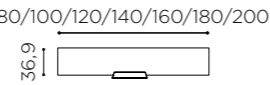
**Adjustable feet.** Complete of extruded aluminium adjustment in oxidized finish, with the possibility of variation in height from 620 mm to 820 mm (H.+200 mm),

SCREENS

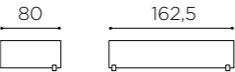
4 5 6



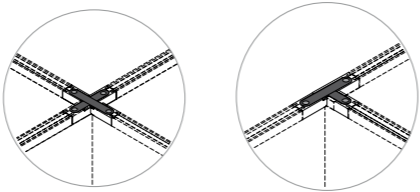
FRONTAL SCREEN



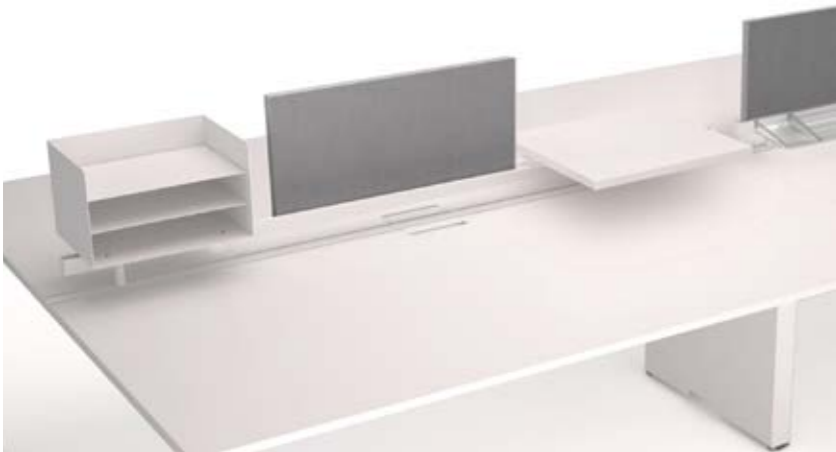
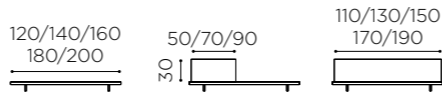
LATERAL SCREEN



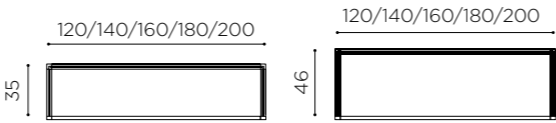
CONNECTING BRACKETS F/RAILS



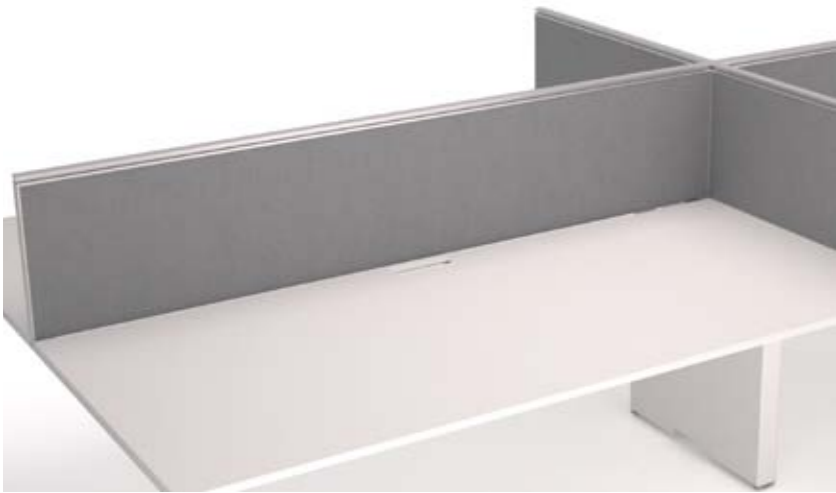
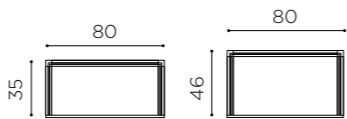
ACCESSORY RAIL



FRONTAL ALUSCREEN

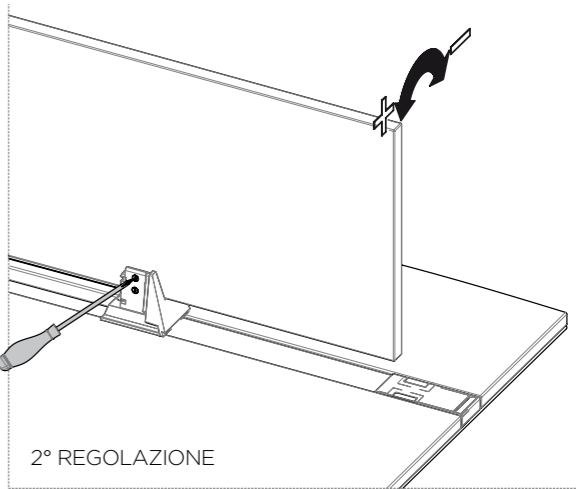
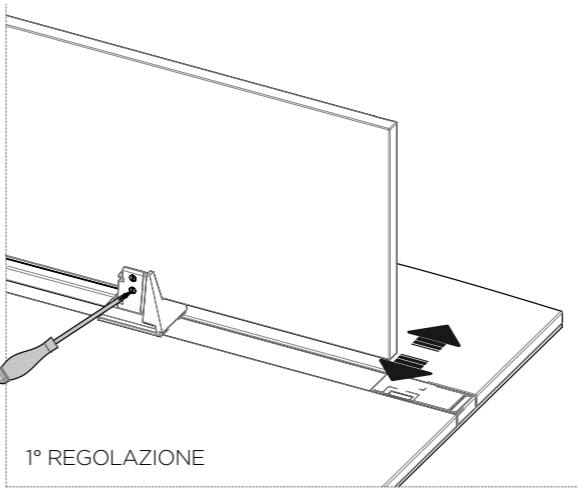


LATERAL ALUSCREEN



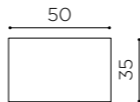
SCREENS PARTICULAR

REGULATION SCREEN WITH BRACKETS

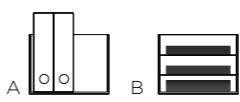


ACCESSORIES FOR BAR

SHELF



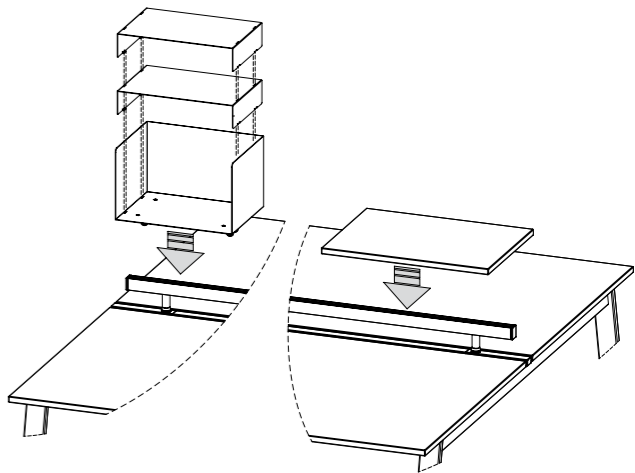
PAPER BOX



LAMP



FIXING OF THE ACCESSORIES ON THE RAIL



EXPLODED VIEW

**LEGEND**  
1. Upper Profile  
2. Vertical Profile  
3. Internal panel with different features

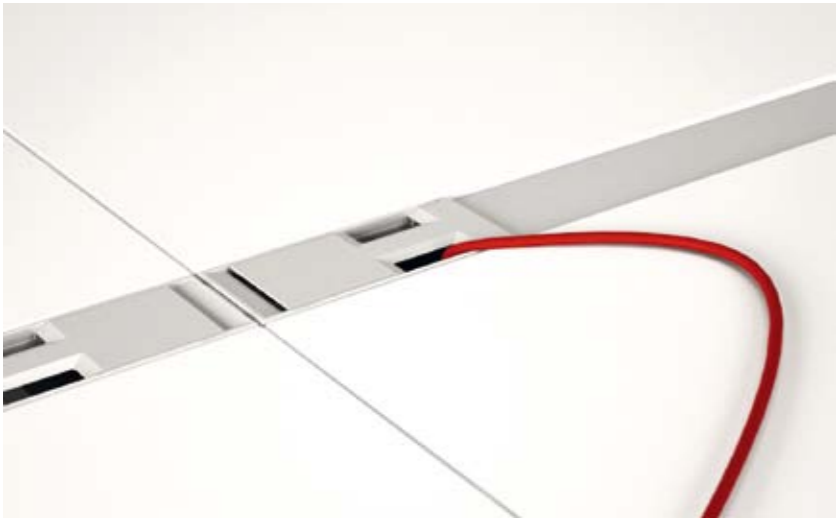


SCREEN CHARACTERISTIC

- ONLY UPHOLSTERED IN FABRIC
- SOUNDPROOF
- PINNABLE

SHUTTER

END CABLE GUIDE

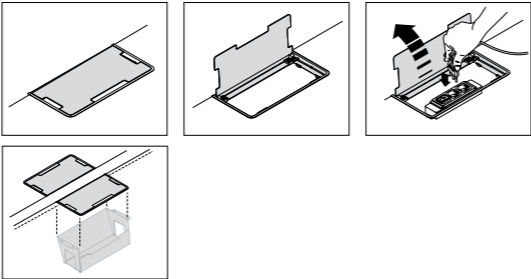


Made of ABS, is composed of 3 parts: lower base, upper base, and snap closure; assembled together, they constitute the finished element and, with a useful compartment of 147x50 mm, they guarantee the passage of electrical grommet. The cable is always positioned outward from the “user” side and on the top: on straight tops and on the wave there is only one, centrally located with respect to the length of the top, while on the 160x160 and 160x120 shaped tops there are two. They are painted in white and aluminium finish.

FLAP



Composed of 3 parts: the lower base and upper base in ABS and steel locking flap door w/ABS hinges, allows access to the underlying wiring box and ensures free passage of 235x100 mm. It is positioned outward from the “user” side, on the top, and centrally located with respect to the length of the top. To support the socket connection to networks, an optional tray is provided. It is painted in white and aluminium finish.

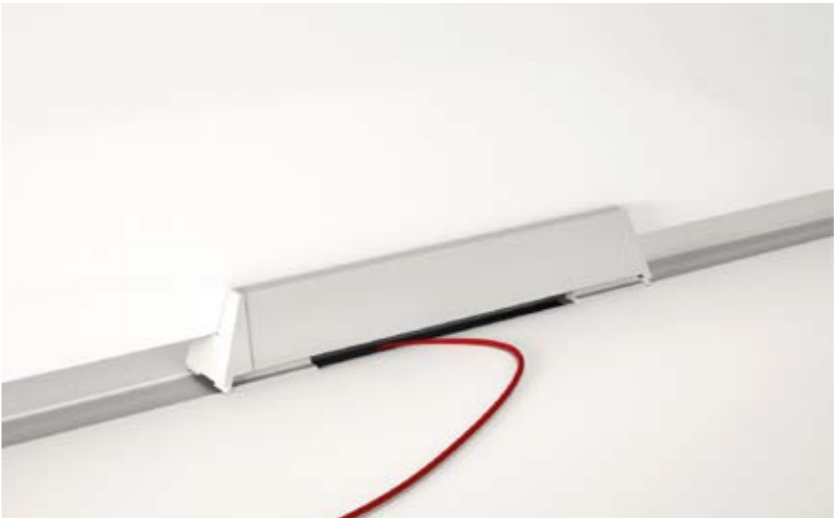


FLAT EDGED CABLE PORT



Made of ABS, is composed of 3 parts: lower base, upper base, and snap closure; assembled together, they constitute the finished element and, with a useful compartment of 147x50 mm, they guarantee the passage of electrical grommet. The cable is always positioned outward from the “user” side and on the top: They are painted in white and chrome finish.

CABLE TRANSIT WITH SCREEN HOLDER



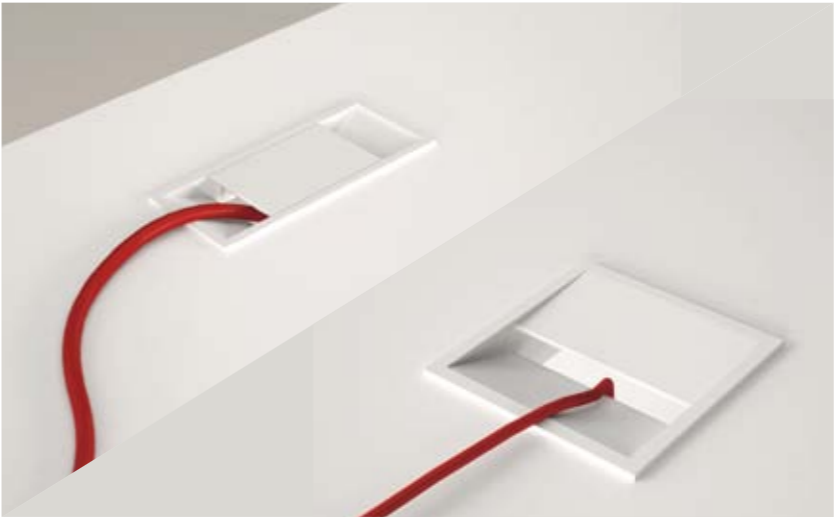
Clamp made of aluminium die-casting and fitted with a protective housing for inspection.

FLIP TOP



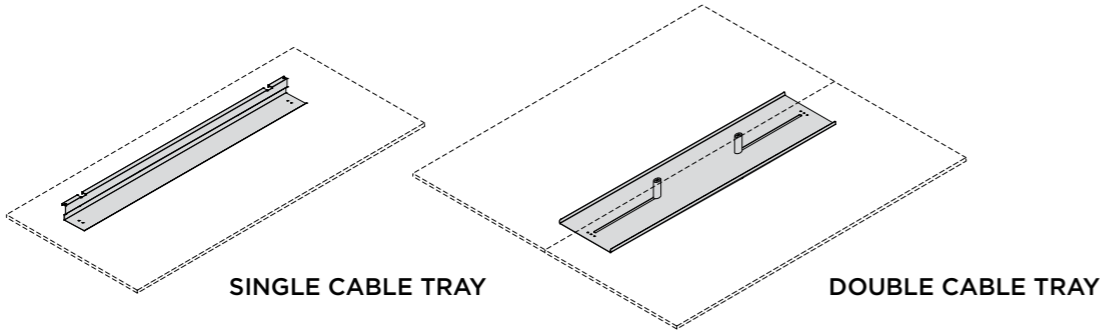
Functionality and versatility combined with an essential line are the characteristics of this cable guide, designed to meet the need to connect quickly and easily the equipment on your desk to the power supply and data transmission network. The double opening of the lid makes it particularly suitable in central position of the meeting tables and shared desks, but also of single desks, allowing easy and quick access to cable grommet. The aluminium and natural anodized, gloss, black and white painted finishes facilitate the matching with the furnishings. The polycarbonate hinges also ensure durability and reliability. To support the socket connection to networks, an optional tray is provided.

SHUTTER/CENTRAL CABLE GUIDE



Available in two sizes, one rectangular and one square is made of ABS and composed of 2 parts: lower base and snap closure; assembled together, they constitute the finished element and they guarantee the passage of electrical grommet. The cable is always positioned towards the inside of the top. They are in chrome finish.

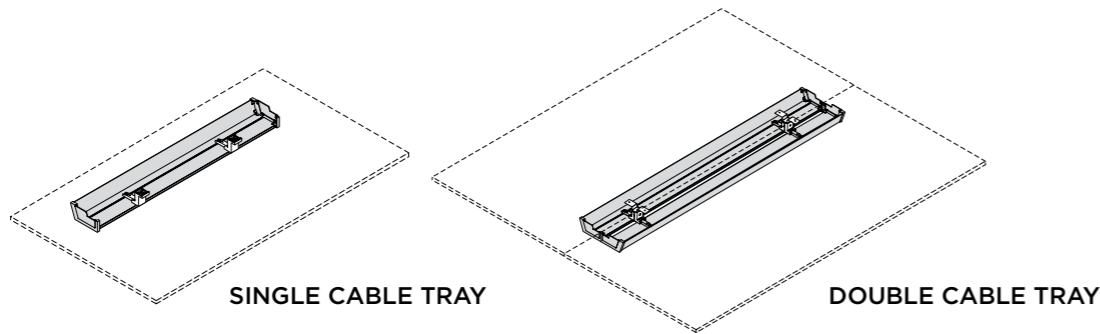
SIMPLE CABLE TRAY



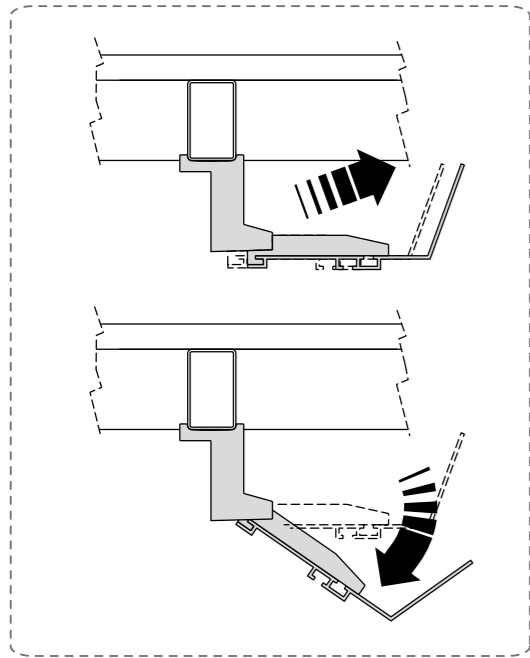
**Single Simple ECO wire box:** made of sheet aluminium, th.1.2 mm, d.200 H.110 mm., can be positioned both under single desktops and opposing workstations. It can be plugged directly onto the beam or on the modesty panel, without use of screws.

**Central double simple ECO wire box:** made of sheet aluminium, th.1.2 mm, d.25 H.15 mm., can be positioned on opposing workstations (bench). It attaches directly to the desk top by means of brackets.

INSPECTIONABLE CABLE TRAY



Made of extruded aluminium, th.21 mm, d.130 H.60 mm., can be positioned both on single desktops and opposing workstations. It's fixed directly onto the beams via a plastic support and screws. It's set up for fastening both the cables and the multiple sockets and for the possible attachment of a vertebra, and is complemented with an ABS closure guard which can be attached to the ends. The container is finished in anodized aluminium while the closure guards are pressed in light grey finish.



WIRING SINGLE DESK



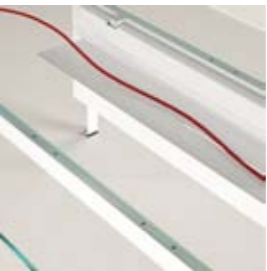
ACCESSORIES FOR CABLING



FLIP TOP



RECTANGULAR GROMMET

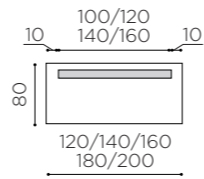


SIMPLE SINGLE CABLE TRAY

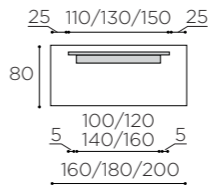


INSPECTIONABLE SINGLE CABLE TRAY

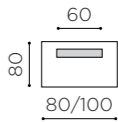
POSITION FOR CABLE TRAY



POSITION FOR SINGLE DESK WITHOUT MODESTY



POSITION FOR SINGLE DESK WITH MODESTY



POSITION ON RETURN

WIRING BENCH



ACCESSORIES FOR CABLING



CABLES ON CARTER

CABLES ON CLAMP

FLAT EDGED CABLE PORT

RECTANGULAR GROMMET

FLAP

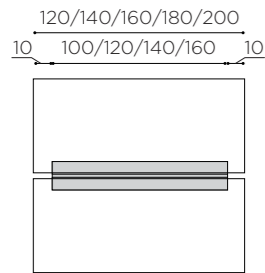


SIMPLE DOUBLE CABLE TRAY

INSPECTIONABLE DOUBLE CABLE TRAY

FIXED INTERMEDIATE CABLE TOWER

POSITION FOR CABLE TRAY



WIRING SINGLE MEETING TABLE



ACCESSORIES FOR CABLING



FLIP TOP

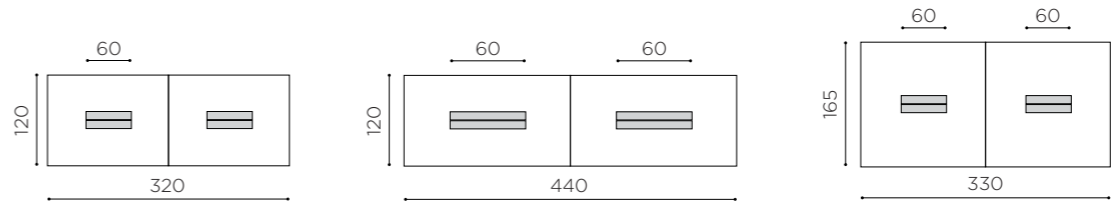
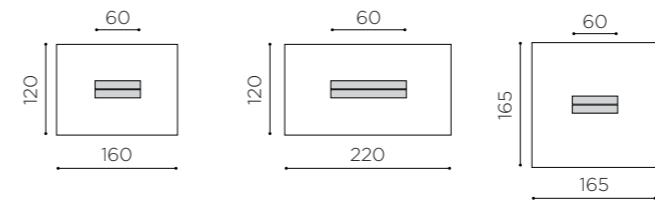
SQUARE GROMMET

SIMPLE DOUBLE CABLE TRAY

INSPECTIONABLE DOUBLE CABLE TRAY

FIXED INTERMEDIATE WIREABLE WALL

POSITION FOR CABLE TRAY



FINISHES COMBINATIONS



TOPS white  
LEGS white



TOPS acacia  
LEGS white



TOPS light oak  
LEGS alluminium



TOPS dark oak  
LEGS black



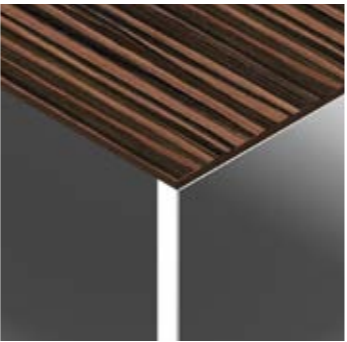
TOPS walnut  
LEGS chrome



TOPS cooked oak  
LEGS white



TOPS wenge'  
LEGS white



TOPS ebony  
LEGS chrome

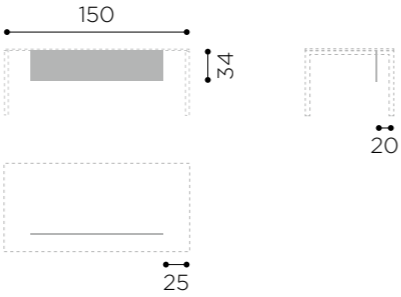
MODESTY PANEL



TECHNICAL CHARACTERISTICS

made of wood fiber panels, th. 18 mm, ennobled in melamine or veneer, class E1.,

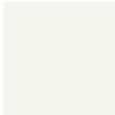
DIMENSIONS



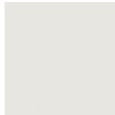
FINISHES

TOPS

MELAMINE



01  
WHITE



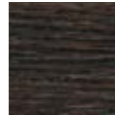
23  
GREY



72  
ACACIA



15  
LIGHT OAK



19  
DARK OAK



27  
WALNUT

GLASS



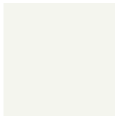
01  
WHITE



02  
BLACK

STRUCTURE

METAL



01  
WHITE



02  
BLACK



36  
CHROME



47  
ALLUMINIUM

SCREEN

MELAMINE



01  
WHITE



02  
BLACK



47  
ALLUMINIO

GLASS



00  
SATINATO

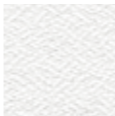


01  
WHITE



02  
BLACK

LUCIA FABRIC



01  
WHITE



23  
LIGHT GREY



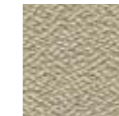
20  
DARK GREY



35  
BLUE



40  
LIGHT BLUE



28  
BEIGE



32  
GREEN



30  
LILAC



41  
VIOLET



34  
RED



37  
ORANGE



08  
YELLOW

BLAZER FABRIC



01  
WHITE



38  
GREY



02  
BLACK



20  
DARK GREY



23  
LIGHT GREY



28  
BEIGE



42  
BROWN



32  
GREEN



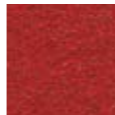
35  
BLUE



41  
VIOLET



30  
LILAC

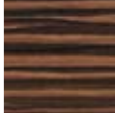


34  
RED

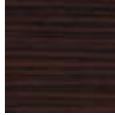


37  
ORANGE

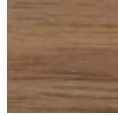
veneer



EB  
EBONY



WE  
WENGÉ



NC  
WALNUT

## CERTIFICATIONS

### ENVIRONMENT

The main Sinetica target is to consider the environment respect as main part of its activity . For this reason Sinetica has decided to use an Enviromental Magament System (SGA) compliant with the UNI EN ISO 14001:2004



Cert. n° 7672 Certificazione ISO 14001

### QUALITY

Sinetica production is followed by the Sinetica technician team in all production phases ,they verify and assure the adequate technologic development ,the engineering and quality , trying to meet the final customer needs and his expectation with the utilized industrial processes. Every production phase is daily pointed out: from the study and the choice of the row materials, to production and the services supplied.

Sinetica has a Quality Company System that is compliant with UNI EN ISO 9001:2008 obtaining and maintaining the Certification from an accredited Organism.



Cert. n° 7672 Certificazione ISO 9001

### FSC®

Furthermore Sinetica, in order to protect the environment and the ethical values in which believes , has obtained an international standard certification FSC (FOREST STEWARDSHIP COUNCIL) which is a warranty for the final customer that the product bought is coming directly or indirectly from certificated forests.



The mark of  
responsible forestry

### FIRE REACTION

According to regulations EN 13501-1 CLASSIFICATION D-S2, D0.